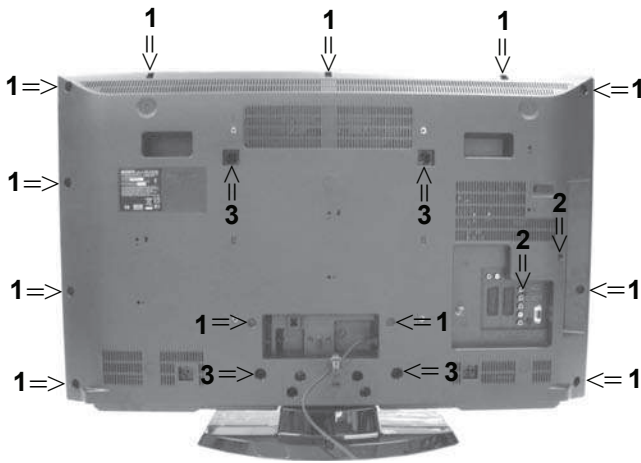


SECTION 2 DISASSEMBLY

2-1. Rear Cover Removal (Step 1)

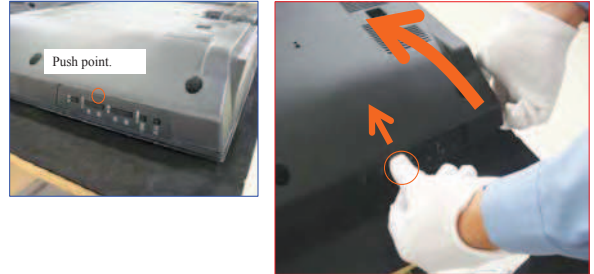


Remove the rear cover fixing screws indicated and refer to Sec 2-2-2.

Screw Part number(s) and Description(s)

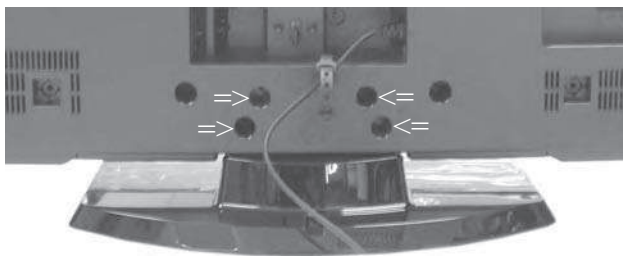
- 1) 2-580-640-01 SCREW, +BVTP2 4X16 (32/37" = 12pcs, 40" = 11pcs)
- 2) 7-685-648-79 SCREW, +BVTP 3X12 (32/37/40" = 2pcs)
- 3) 2-580-602-01 SCREW, +PSW M4X12 (32" = 2pcs, 37/40" = 4pcs)

2-2. Rear Cover Removal (Step 2)



To remove the 'Rear Cover' lift the 'Rear Cover' up slightly from the bottom and then gently push the 'Switch Unit' in by the side controls whilst lifting the 'Rear Cover' up fully from the bottom.

2-3. Stand Assy Removal

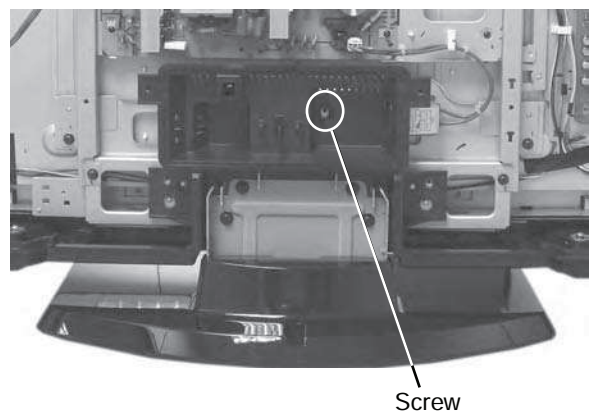


Remove the 4 stand fixing screws indicated and lift the TV set up and away from the 'Stand Assy'.

Screw Part number(s) and Description(s)

- 2-580-608-01 SCREW, +PSW M5X16

2-4. Under Cover Removal

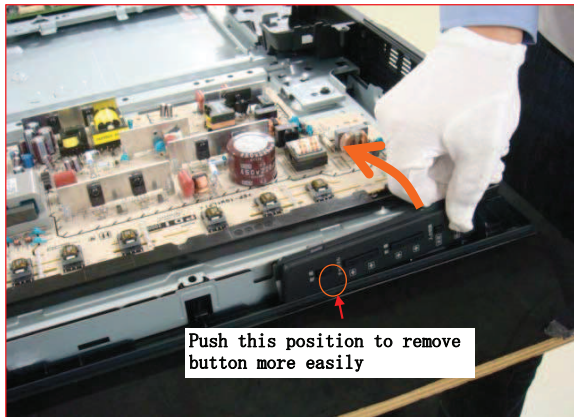


To remove the 'Under Cover' first remove the Rear Cover (See Sec 2-2-1 & 2-2-2) and then remove the Stand Assy (See Sec 2-2-3). Then remove the 1 screw circled and gently pull the 'Under Cover' away from the back of the TV set.

Screw Part number(s) and Description(s)

- 2-580-602-01 SCREW, +PSW M4X12

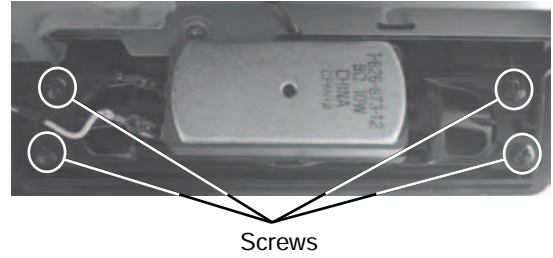
2-5. Switch Unit Removal



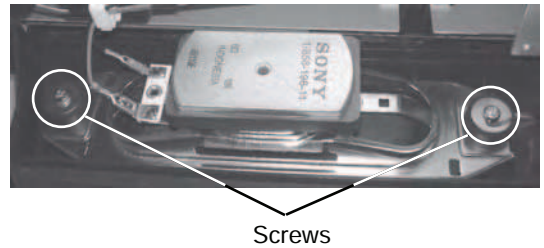
To remove the 'Switch Unit' lift the bottom of the bracket towards the TV set. Push the top of the bracket in the shaded area in the photograph. The bracket will then release from its boss and can be removed from the TV set.

2-6. Loudspeaker Removal

32 & 37 inches



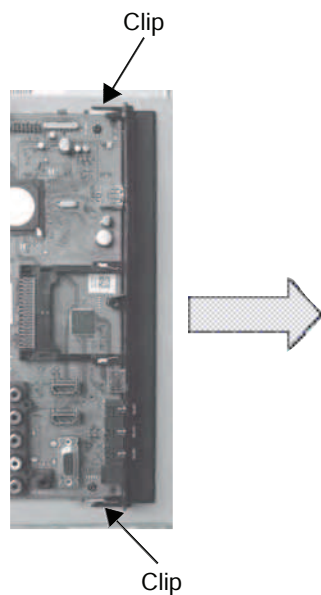
40 inches



To remove the 'Loudspeaker' first disconnect the speaker cables and then remove the screws circled (32/37" = 4 pcs, 40" = 2 pcs).

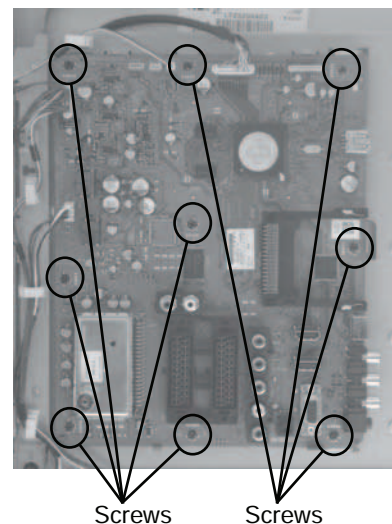
Screw Part number(s) and Description(s)
 2-580-639-01 SCREW, +BVTP2 4X12 (37 inches)
 2-580-654-01 SCREW, +PWTP2 4X16 (40 inches)

2-7. Side Jack Bracket Removal



Release the 2 clips indicated and gently pull the bracket away from the 'B' board in the direction of the arrow.

2-8. B Board Removal



To remove the 'B' board disconnect all the connectors and then remove the 9 screws circled and ease the board gently away from the back of the TV set.

Screw Part number(s) and Description(s)
 2-580-629-01 SCREW, +BVST 3X8